

# MILAN LX

SPEC SHEET



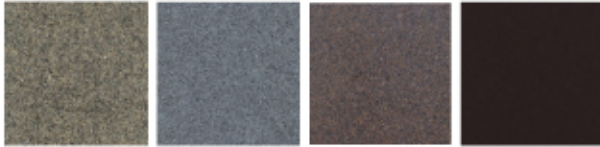
## DURA-LAST™ Cabinet System

Unlike other spas, The Strong Spa cabinet requires no maintenance and will be just as beautiful in the years to come as the very first day. Wood Frames will rot, warp and fade. Steel Frames will rust and weaken, but the patented DURA-LAST™ cabinet will never deteriorate and we guarantee it with the **INDUSTRY'S FIRST LIFETIME WARRANTY!**

## Spa Warranty

- ★ 7 Years Acrylic Spa Surface
- ★ 5 Years Plumbing & Equipment
- ★ 3 Years Labor
- ★ **Lifetime Warranty on Cabinet**

### cabinet color options



cobblestone gray granite millstone espresso

### acrylic color options



sterling silver pearl shadow moonscape desert horizon cobalt



Jets	52 stainless steel
Seats	4-5
Cooldown Seat	Yes
Step & Towel Holder	Yes, Lighted
Waterfall	Backlit Molded LED
Underwater Light	Yes
Lighted Controls	6
Ozonator	Yes
Pumps	2 x 5BHP
Heater	4kW + ThermoCELL
Voltage	240V/60hz
Dry/Filled Weight	785 / 3,090 lbs.
Gallons	325
Dimensions	91 x 91 x 36"